

# SAFETY AND SUSTAINABILITY STATEMENT





# AUSTRALIA'S PREMIER COMMERCIAL PAINTING SOLUTION PROVIDER

**3,100**  
WORKSITE  
REVIEWS

ON AVERAGE OUR  
OPERATIONS TEAMS  
COMPLETE **3,100** WORKSITE  
REVIEWS PER YEAR

**2,400**  
RISK  
ASSESSMENTS

ON AVERAGE OUR  
OPERATIONS TEAMS  
PERFORM **2,400** RISK  
ASSESSMENTS PER YEAR

**EST.**  
**1949**

Higgins Coatings is Australia's premier painting solution provider, servicing a broad range of industries and national multi-site companies since 1949.

Australian family owned and operated, we offer a flexible and localised service across our 20 branches, backed with the support of a national team and strategic supplier relationships.

From detailed site audits and colour specifications, to comprehensive access and compliance plans, you can rest easy knowing that no matter how complex your project is, our team has the expertise and resources to handle every aspect.

With a commitment to safety, quality and the environment, Higgins has achieved an industry-leading ISO tri-certification.

ISO 9001  
ISO 14001  
ISO 45001  
AS/NZS 4801  
BUREAU VERITAS  
Certification





# MANAGEMENT SYSTEMS

## ISO TRI-CERTIFICATION

Safety is at the forefront of everything we do. Everybody deserves to go home safely, and Higgins have implemented the necessary management systems to ensure that they do. Putting in place an Internal Management System not only benefits the environment but also has substantial benefits for our clients by reducing costs, mitigating risk and improving efficiency.

By having well-defined and documented procedures, our teams can work smarter, improving the consistency of output while also increasing efficiency. Our integrated management plan identifies and encourages more time saving processes and catches any defects or potential problems early.

Our documented culture of safety and management systems has enabled us to achieve ISO certification for:

- ISO 9001: Quality Management Systems
- ISO 14001: Environmental Management Systems
- ISO 45001: Occupational Health and Safety
- AS/NZS 4801: Safety Management Systems

## HIGGINS OPERATIONAL WAY (HOW)

Higgins Project management system HOW, is a paperless, iPad based system directly linked to our IMS (Integrated management System). All documents hosted in HOW are available to be shared with our customers at any time.

The system has improved incident reporting, defect management, site review and inspections; all of which benefit the customer via more efficient and effective project management. Other benefits are:

- Mobile access
- WHSE management system
- Centralised risk management
- Incident reporting
- Defects

Safety is an important aspect of all our roles, so everyone who joins Higgins receives ongoing safety training. Each member of Higgins is also trained on HOW and can log any incident that they might experience.

### ISO 9001: Quality Managment Systems



### ISO 14001: Environmental Managment Systems



### ISO 45001: Occupational Health and Safety



### AS/NZS 4801: Safety Management Systems



# OUR SAFETY NON-NEGOTIABLES

At Higgins we have **5 main rules** to tackle the 5 top hazards, which may lead to serious injuries or possible death on our work sites.

1

**ALL PROJECTS MUST HAVE DOCUMENTATION SUCH AS:**

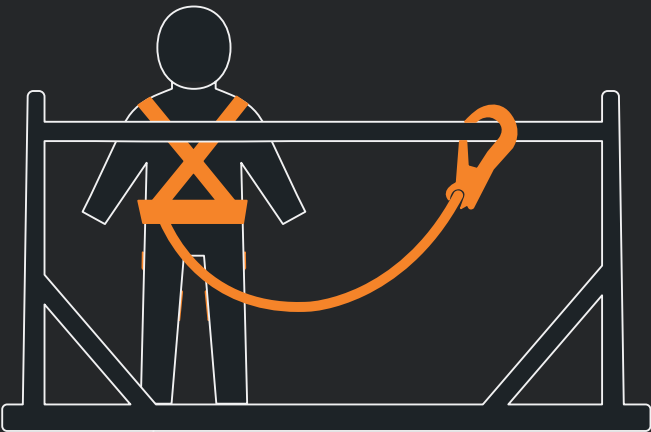
- Worksite Risk Assessment
- SWMS



2

**WHEN WORKING IN A BOOM LIFT OR A SWING STAGE, A HARNESS MUST BE WORN.**

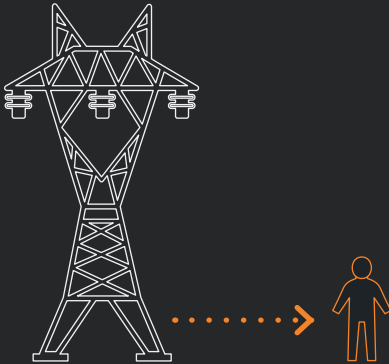
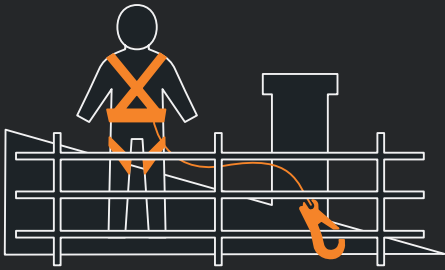
- Harness must be attached to a rated anchor
- Harness and lanyard must be in good condition and be within inspection dates



3

**WHEN A FALL RISK EXISTS APPROPRIATE FALL PREVENTION METHODS ARE REQUIRED.**

- When working on roofs or near a fall edge, fall restraint methods such as; edge protection, platform ladders, or fall restraint harnesses are to be worn.



4

**POWERLINE EXCLUSION ZONES MUST BE MAINTAINED WHEN WORKING NEAR POWERLINES.**

- Spotters used where jurisdiction specifies in regulations
- Permit provided by asset owners
- Risk assessment specifies clearance and methodology of working

5

**PPE MUST BE WORN AS PER THE SAFETY DATA SHEETS FOR ANY HAZARDOUS OR DANGEROUS SUBSTANCE.**

- Section 8 of a safety data sheet specifies the appropriate PPE to be worn
- Safety Data sheet must be available on site where the product is used







# OTHER SAFETY STANDARDS

## WORKING AT HEIGHTS

When working at heights the hierarchy of control for fall prevention will be used;

1. Work on the ground or from a solid construction.
2. Use of temporary work platforms such as scaffold or EWP.
3. Using work positions systems, such as industrial rope access systems.
4. Using fall-arrest systems.
5. Using a platform ladder.
6. Using an extension ladder which has been secured at the top and bottom.
7. Using administrative controls, such as no-go zones.

Higgins has a compliant process for egressing an EWP basket creating efficiencies for your project in a safer way.

## TRAFFIC MANAGEMENT

Any works conducted on or near roadways, pedestrian footpaths or has the potential to have an impact on the safe flow and access of vehicles and pedestrians, requires some form of traffic management.

We work with local council to provide notification and obtain permits necessary to execute works with traffic management.

## LEAD MANAGEMENT

Prior to preparing surfaces on suspected surfaces that may contain lead paint, our operations teams ensure a lead test is conducted.

If lead is found, certain procedures need to be followed if removing the existing surface or preparing it to be painted over.

## ASBESTOS MANAGEMENT

Asbestos when sanded or drilled can form a fine airborne dust made of tiny fibres. Buildings constructed prior to 1983 could contain Asbestos Containing Materials (ACM).

If we suspect ACMs are identified, our operations team will request an asbestos register, and leave the ACMs undisturbed until safe to do so.



If its red - it's lead



# SUSTAINABILITY

## ENVIRONMENTAL

### PROJECT EARTH

Higgins has partnered with Dulux on Project Earth – a program that involves plastic paint pails being collected from collection sites, before being granulated and recycled into products that Dulux sells to consumers.

We have set up collection sites at several branches and are looking to add more soon.



### HIGGINS IS CARBON NEUTRAL

As part of our commitment to environmental responsibility, sustainability and to neutralise our carbon footprint, in 2020, several of our sales teams contributed towards planting trees to offset our Carbon Emissions.

To review the environmental impact made by our sales teams view our profile at [ecologi.com/higginscoatingsptyltd](https://ecologi.com/higginscoatingsptyltd)



### BLOCKTEXX

Higgins have partnered with BlockTexx for our uniform recycling, which provides a significant environmental impact. Higgins provides retired uniforms to BlockTexx who combine chemical recovery technology and advanced manufacturing to produce high quality recycled materials of rPET pellets and cellulose powder from unwanted textiles and clothing.

More information about BlockTexx can be found at [blocktexx.com](https://blocktexx.com)



## WELL-BEING

### EMPLOYEE ASSISTANCE PROGRAM

At Higgins, we strive to create a safe and welcoming work environment for all of our employees. We recognise that the rigours and stressors of work can feel overwhelming at times, and in conjunction with Lifeworks offer our Employee Assistance Program; a confidential, free counselling available to all Higgins employees.



### BLUE TREE PROJECT

Higgins has partnered with Blue Tree Project, a Western Australian non-profit organisation that aims to spark difficult conversations and encourage people to speak up when battling mental health concerns. By registering dead trees and painting them blue, the organisation emphasises the message 'it's OK not to be OK'. We have supported their WA School Mural project with the provision of subsidies to access equipment/products.



### R U OK? DAY

Higgins are proud supporters of R U OK? Day and last year to recognise the day hosted a national staff webinar where we heard from former AFL great, and mental health advocate Wayne Schwass. Wayne shared some personal experiences about his mental health and provided us with a toolbox to help us prioritise our own mental health.



# OUR SAFETY TEAM



**BEN COOK**

**National SHEQ  
Manager**

**E** [bcook@higgins.com.au](mailto:bcook@higgins.com.au)

**M** 0418 550 289



**MICHAEL  
O'SHAUGHNESSY**

**General Manager -  
HR and Safety**

**E** [moshaughnessy@higgins.com.au](mailto:moshaughnessy@higgins.com.au)

**M** 0418 317 861



**GLENN MINETT**

**Senior HR Manager -  
QLD/NSW/ACT**

**E** [gminett@higgins.com.au](mailto:gminett@higgins.com.au)

**M** 0487 000 535